



Eldex®

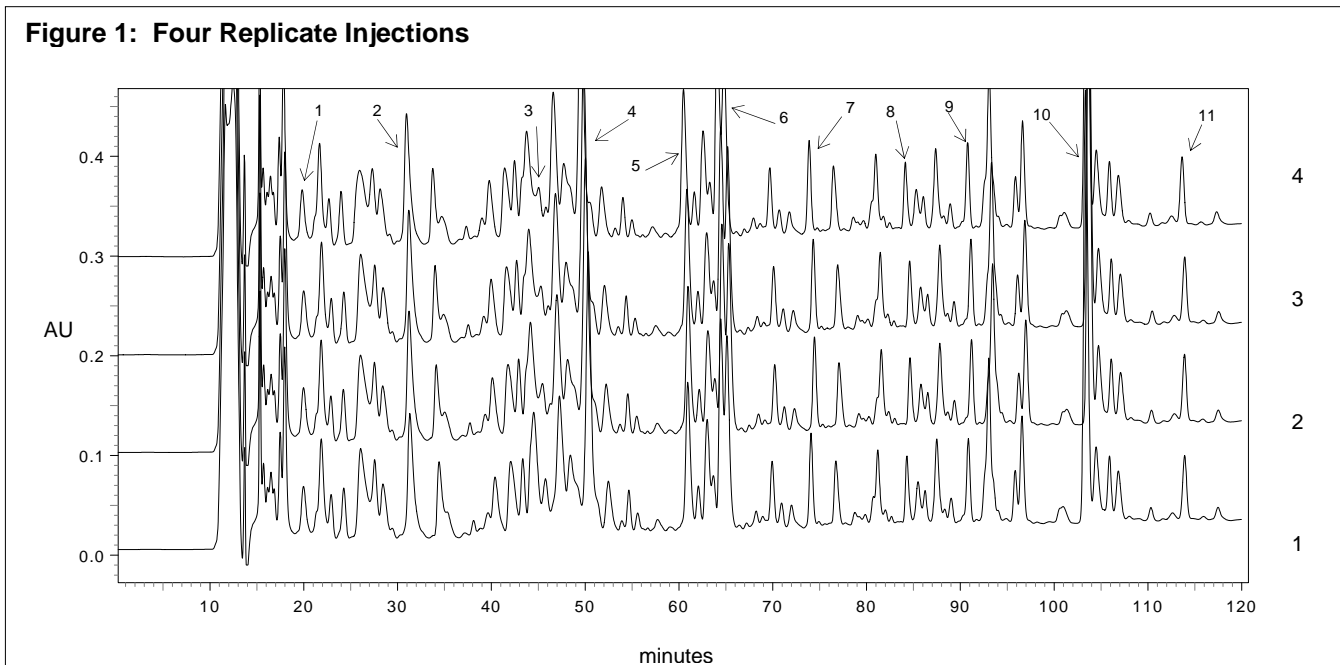
Eldex Laboratories, Inc. Tel: (707)224-8800
30 Executive Ct. (800)969-3533
Napa, CA 94558-6278 Fax: (707)224-0688
USA email: sales@eldex.com

Application Note

MicroPro™ Pump: 1 μ L/min: 4-74%B

α -chymotrypsinogen A tryptic digest

The ability of the μ Pro syringe pump to deliver reproducible gradients at flow rates of 1 μ L/min. is demonstrated by the following separation of α -chymotrypsinogen A tryptic digest. Figure 1 shows four consecutive injections. Table 1 indicates the statistical reproducibility of the separation.



Conditions:

Pump: MicroPro 2mL syringe pump
Solvents: A = .05% TFA in water
 B = .045% TFA in 60% acetonitrile/water
Mixer: 2 μ L static
Gradient: Linear 4 - 74% B in 140 min.
Flow Rate: 1 μ L/min.
Sample: 50 pmole α -chymotrypsinogen A tryptic digest; 20 min. injection delay
Column: LC Packings Fusica 150 x .320 mm (Vydac C18, 5 μ m 300Å)
Detector: UV @ 210nm w/ LC Packings U-Z View™ capillary flowcell (35nL)

Table 1: Gradient Reproducibility Data

	1	2	3	4	5	6	7	8	9	10	11
	Ret. Time	Ret. Time	Ret. Time	Ret. Time	Ret. Time	Ret. Time	Ret. Time	Ret. Time	Ret. Time	Ret. Time	Ret. Time
Min.:	19.83	30.93	45.03	49.53	60.5	64.43	73.87	84.13	90.77	103.33	113.63
Max.:	20	31.3	45.77	50.33	60.97	64.77	74.43	84.63	91.2	103.67	113.9
Mean:	19.94	31.17	45.38	49.93	60.81	64.55	74.17	84.42	90.99	103.51	113.83
Std. Dev.:	0.07	0.16	0.31	0.34	0.21	0.16	0.25	0.24	0.21	0.17	0.13
%RSD:	0.37	0.52	0.68	0.67	0.35	0.24	0.34	0.29	0.23	0.16	0.12